

Cost per day or occurrence:

\$1,600
per occurrence



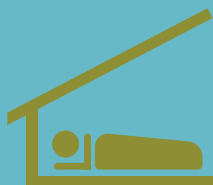
Emergency
Room

\$1,000
per occurrence



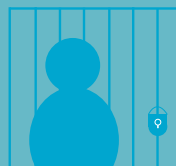
Ambulance

\$30 per day



Shelter

\$150 per day



Jail

\$798 per day



Crisis
Center

Total cost per individual and event:

\$12,800



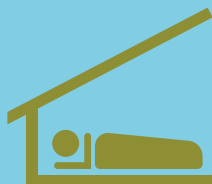
(8) Emergency
Room Visits

\$8,000



(8) Ambulance
Trips

\$4,830



(23) Shelter Stays
@ 7 days per stay

\$4,200



(28) Days
in Jail

\$5,586



(7) Days in
Crisis Center

THE HIGH COST OF NOT ENDING HOMELESSNESS

IT COSTS MORE TO DO NOTHING - LET'S ACT NOW!



**\$35,416/person average annual cost
due to chronic use of emergency services**

OR



**\$16,000/person average annual cost
to provide housing with supportive services**



Every day of homelessness decreases the ability to obtain and keep employment



Every day of homelessness increases the likelihood of physical or sexual assault



Every day of homelessness increases the risk of drug or alcohol addiction



Every day of homelessness increases the likelihood of engagement in risky behaviors such as transactional sexual behavior



Every day of homelessness increases the risk of long term and chronic disease or illness



Every day of homelessness increases the probability of becoming homeless again



Every day of homelessness increases the likelihood of suffering from a mental health disorder



Every day in a homeless situation increases the likelihood of never exiting a homeless situation